

**CITY OF ISSAQUAH
Environmental Board**

6:30 PM
January 31, 2024

Tibbetts Creek Manor
750 17th Ave NW, Issaquah, WA
98027

MINUTES

BOARD AND ADMINISTRATIVE PERSONNEL PRESENT

Board members:

Jamie Finch, Chair
Don McQuilliams, Vice Chair
Nancy Davidson
Anne Newcomb
Prajakta Ghatpande
Tom Anderson
Janet Wall
Joy Lewis
Dixie Bair

Administration/Staff:

Stacy Vynne McKinstry, Sustainability
Manager
David Reedy, Sustainability Coordinator
Kathleen Hillery, CivicSpark Fellow
Stephen Padua, Long Range Planning
Manager
Minnie Dhaliwal, Community Planning &
Development Director

Ashwin Manoharan* (unexcused absence)
Alix Lee-Tigner (excused absence)
Ashwin Kannan* (unexcused absence)

*Youth/young adult members.

CALL TO ORDER

BOARD CHAIR FINCH called the meeting to order at 6:31 PM.

PUBLIC COMMENTS

ANN FLETCHER noted her appreciation that the new Environment Element aligned with the 2021 Issaquah Climate Action Plan (ICAP) and that the two documents seemed to reinforce each other, especially the inclusion of the measurable targets. FLETCHER provided a recommendation that the title of the comprehensive plan element be changed to Environmental and Climate Stewardship.

AGENDA ITEMS

a) **Review of the Environment Element of the Comprehensive Plan (D)**

Presented by:

Stephen Padua, Long Range Planning Manager

PADUA along with VYNNE MCKINSTRY and REEDY facilitated a conversation and presentation to the Board on the policies and goals of the new Environment Element per Washington House Bill (HB) 1181 of Issaquah's Comprehensive Plan update, including edits made by Board Members. Board Members provided comments on the narrative structure before providing feedback on major edit suggestions or questions on existing policies. Finally, Board Members discussed policy additions suggested by other Board Members. Staff will review board recommendations and make updates to the element taking recommendations into account.

OTHER BUSINESS / ANNOUNCEMENTS

01-31-24 Environmental Board Minutes

Page [2]

VYNNE MCKINSTRY, MCQUILLIAMS and FINCH gave a quick debrief on the Board Retreat and its impact on the direction of the Board for 2024.

VYNNE MCKINSTRY provided updates to the Board on ICAP implementation actions.

ADJOURNMENT

The meeting was adjourned at 8:43 PM.

INQUIRIES

Environmental Stewardship & Climate Resilience Action

INTRODUCTION

Nestled between the Puget Sound and the Cascade Mountains, Issaquah’s natural beauty abounds—, ~~It’s no surprise~~ Our community has a long history of environmental stewardship—protecting the ecosystems, habitats, and wildlife ~~that we value most in the City.~~

~~most.~~ In the Pacific Northwest, ~~we’ve we have~~ seen a significant increase in the frequency and severity of wildfires and heatwaves, alongside declining snowpack and increased flooding. These climate hazards have had broad-ranging impacts on our community’s health, safety, and local economy. It has become clear that the Issaquah Community must also meet the urgent challenges of climate change. The efforts on the natural environment will continue to help Issaquah with climate change but the need to reduce greenhouse gas emissions requires substantial new actions.

Issaquah’s ~~sustainability and~~ Environmental Stewardship and Climate Action Goals and

QUICK FACTS

- Issaquah’s largest sources of GHG emissions are energy consumption (51%) and transportation (42%).
- These emissions are projected to grow alongside population and job growth into the future in the absence of climate action.
- While state and federal policies are projected to help substantially reduce these future emissions, we will need to reduce a significant portion through local climate action.
- Although climate change is a global issue, the impacts will be felt locally. Issaquah is projected to experience longer and more frequent heat waves, less rain when we need it and more when we don’t, and reduced snowpack.
- Reducing emissions is an important part of mitigating global climate change, but local efforts to increase adaptive capacity and resilience are still needed to protect our community and the natural environment we value.

Commented [ND1]: No discussion of Environmental Stewardship. What is “climate Resilience”? Resilience is not described or in this section.

Commented [SV2R1]: Need to define climate resilience in document and show relationship to adaptation, preparedness and mitigation.

Commented [ND3]: Need to change title from Climate resilience to climate Action

Commented [SV4R3]: Board suggested the previous title as resilience is a required factor under HB1181. For Board to discuss if they are comfortable with the revision.

Commented [JF5]: We should define what we mean by climate resilience. I’m unclear whether this is mitigation + adaptation or a separate term

Commented [JF6R5]: I also think we should be mentioning the warming we are already seeing and any other broader context on why we are setting goals (ie best available science suggests that the worst impacts of climate change will occur when temperature increases X degrees.

Commented [ND7]: Suggest reordering this so that we follow the title of this chapter and cover the overarching element of the chapter – the environment and having the climate follow it (since it is a subset of the environment)

Commented [SV8]: COMMENTS RECEIVED FROM: NANCY, CONNIE, JAMIE, PRAJ, JOY, ALIX

Commented [ND9]: The quick facts table is all climate resilience oriented. We need to include environmental stewardship as well. There are numerous facts about the natural environment in Issaquah

Commented [SV10R9]: Suggestion to move this section after the introduction to the natural environment and ensure there are quick facts about the environment as well.

Commented [JF11]: It seems like the Quick Facts should either be split into Natural Environment & Climate or we need to find a section that can cover both

Commented [SV12]: JOY: proposed edit

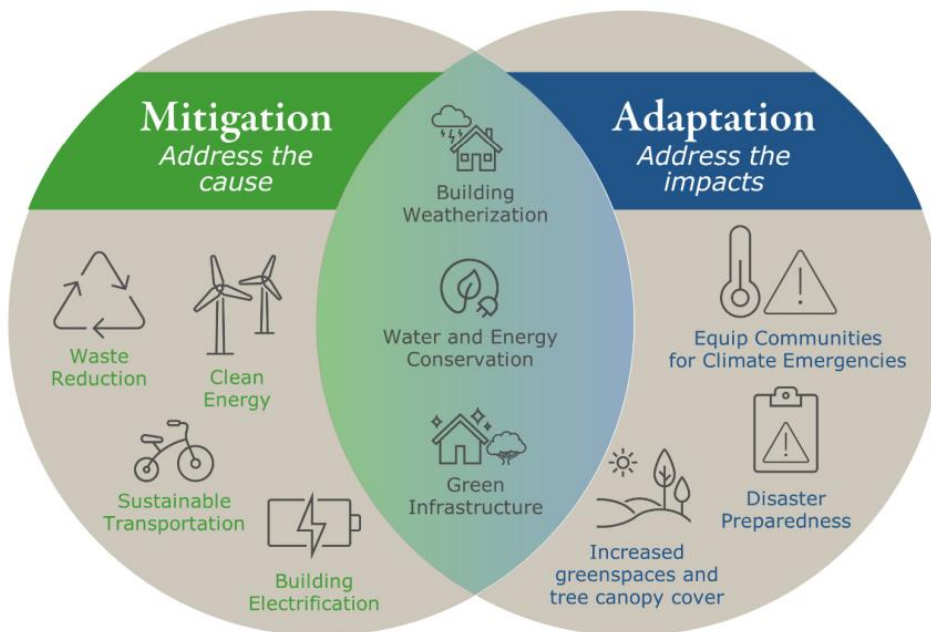
Commented [SV13]: JOY: proposed edit

~~Policies environmental stewardship efforts~~ are the culmination of analysis, best available science, community engagement, and strategic problem-solving. The City strives to continue to protect and restore the natural resources we deeply value, while reducing greenhouse gas (GHG) emissions and enhancing livability and resilience in Issaquah.

Comments on Intro

MITIGATION & ADAPTATION

To achieve our vision for Issaquah, a mix of both mitigation and adaptation strategies and actions are necessary for a sustainable and resilient future. Need to remove graphic. This is a strategy.



Mitigation actions address the cause of climate change by reducing GHG emissions and increasing carbon "sinks" to store these gases.

Adaptation actions address and manage the impacts of climate change by protecting and enhancing vulnerable social and biological systems. Despite local mitigation efforts, we must still prepare for and adapt to the unavoidable impacts of climate change we are already experiencing.

In addition to the 2021 Climate Action Plan, the City released a Climate Vulnerability Assessment (CVA) in 2023. The CVA provides a detailed synopsis of anticipated climate

- Commented [JF14]:** It seems like we need to discuss how environmental stewardship and climate action fit together and what is encompassed by these topics. Given that this is a new element it seems like it would be helpful to more closely define what this is.
- Commented [ND15]:** This section is focused on Climate change. This section of the comp plan also refers to environmental stewardship. Thus, we need to incorporate an intro to environmental stewardship into this section as well.
- Commented [SV16R15]:** Staff to add an introduction on ES. Have come first to follow the title of the element (or switch title)
- Commented [SV17R15]:**
- Commented [JF18]:** It seems like we have already hopped into Climate topics when we haven't covered the outer topic of the Environment

- Commented [JF19]:** It seems like increased green spaces and tree canopy cover has both mitigation and adaptation benefits
- Commented [SV20R19]:** We can modify this section to a description of mitigation, adaptation, resilience. Likely not include actions as those would be in a functional plan, but will discuss with CPD.
- Commented [SV21R19]:**
- Commented [SP22R19]:** Agreed, graphic was mainly used to show overall strategy, but if too detailed, we can simplify for comp plan purposes.
- Commented [JF23]:** Seems like it may be worth mentioning that the reason we need to reduce emissions is to help hit targets to reduce emissions and reduce the amount of warming. Right now it seems like Mitigation & Adaptation are a bit at odds unless you have the context that the climate is already warming and causing impacts.
- Commented [SV24]:** Will need to include some mention of the functional plans – for discussion with CPD.
- Commented [SP25R24]:** We have no issue if you want to include more about functional plans but it's not required.

impacts and risks to the City and the City's ability to adapt to these impacts. The CVA provides the basis for the resilience ~~goals and policies identified in the Comprehensive Plan.~~

~~Both the ICAP and CVA advocate for targeted action by the City of Issaquah to incorporate equity considerations into programs, policies and projects. Equity in climate action recognizes that the climate change impacts faced by our community and the ability to pursue climate solutions within different community groups are not equal. Therefore, equity was built into the development of the ICAP as one of the criteria for evaluating actions. The results of this effort can be seeing in City commitment to ensure all community members have the ability to pursue climate solutions while building resilience of vulnerable community groups to adapt to climate change impacts.~~

VISION

We will minimize the potentially negative impact of human activities, enhancing the natural systems and features of the City and surrounding area (from Land Use Element of the 2021 Comp Plan).

- ~~Through~~ bold and aggressive actions, we will:
 - enhance our natural environment,
 - ~~environmental stewardship and climate action, we will~~ reduce emissions, and increase community resilience to climate impacts.

~~and protect and enhance our natural environment.~~

- We will collaborate closely with neighboring communities and the region, and ~~leading~~ by example in our own City operations to establish Issaquah as a regional leader.

- ~~We will educate and engage our residents and businesses to inspire behavior change and foster accountability in addressing climate change and enhancing our natural environment.~~

- We will be thoughtful and intentional in our approach to environmental stewardship and climate action and environmental stewardship, ~~taking this opportunity to opportunities to address existing inequities in our community and working to -~~ enhance livability for all Issaquah residents.

- We will cultivate effective equitable climate resilience strategies through regional and local collaboration on climate change mitigation and adaptation actions and policies protecting natural systems and enhancing community well-being.

- We will grow and nurture an informed staff with city employees and contractors receiving tools for broadening their knowledge through increased educational resources and requirements for training and performance metrics.

Commented [JF26]: How do resilience and adaptation differ? Should they be using common language?

Commented [ND27]: This section should be written to discuss adaption, mitigation and enhancement for both the Environment and Climate Action.

Commented [ND28]: Not sure this is an accurate statement

Commented [ND29R28]: Not sure what "climate action" is

Commented [JF30]: Seems like it would be helpful to split the vision and goals into Natural Environment topics & Climate Change

Commented [JF31R30]: This section does not provide any specifics or really lay out a vision. Better examples of that would be: Aggressively cutting emissions to achieve net zero by 2050 to do our part in avoiding the worst impacts of climate change. Enhancing green spaces and natural areas to increase tree canopy, overall forest health, health & protection of ...

Commented [SV32]: ALIX: In my mind, vision should come directly after the introduction and before the ...

Commented [JF33]: Just operations or also investments / capital spending?

Commented [JF34]: Climate is an area it seems like we should be committing to specific goals, particularly because ...

Commented [JF35R34]: What are we a leader in? Carbon mitigation, adaptation, environmental stewardship?

Commented [JF36]: The word "Inspire" needs to be in here

Commented [SV37]: •JOY Proposed Edit: We will educate and engage our residents, ...

Commented [JF38]: I'd much rather us talk about a process of measuring results and using those results to improve ...

Commented [ND39]: We have a lot to do in this effort and I am not convinced that we should be focusing on existing ...

Commented [JF40]: This section is woefully inadequate for environmental stewardship unless the land use section is tak ...

Commented [SV41]: •JOY: proposed edit: We will be thoughtful, intentional, and evidence-based ...

Commented [SV42]: JOY: proposed edit: Add a line that addresses the psychological needs of community, sud ...

Commented [JF43]: Equity is already covered above and I think the key attribute of this section is effective

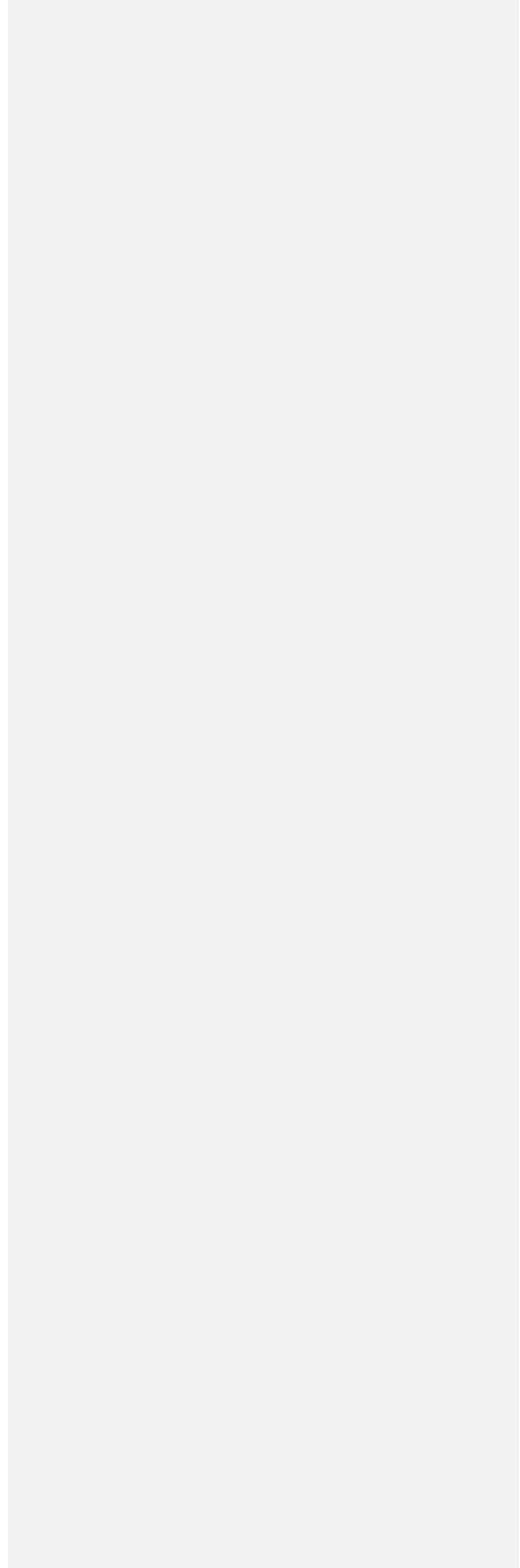
Formatted: Font: Verdana, 10 pt, Font color: Text 1

Formatted: Indent: Left: 1.52", Hanging: 0.25", Line spacing: single, No bullets or numbering

Commented [A44]: Will need to allocate budget for training, will need to reward based on obtaining certification ...

Commented [SV45]: JOY

| .



GOALS AND POLICIES

Greenhouse Gas Emissions Reductions

Resilience & Wellbeing

Natural Systems & Water Resources

Streams, Wetlands & Wildlife

Trees

Results & Accountability

General comment: In accordance with the title of this section, recommend reordering this section as shown ~~above~~below. In general, if we undertake Environmental Stewardship, then some climate action will be achieved. If a section on Climate Action is written, the Quick Facts table and mitigation actions can be moved to that section since it is referring to Climate Action. These moves were not completed.

Environmental Stewardship

Streams, Wetlands & Wildlife

Water Resources

Trees

Climate Action

Greenhouse Gas Emissions Reductions

Resilience & Wellbeing

Results & Accountability

Climate Action

Climate Action (this general background section should be written and added)

Background

- Issaquah’s largest sources of GHG emissions are energy consumption (51%) and transportation (42%).
- These emissions are projected to grow alongside population and job growth into the future in the absence of climate action.
- While state and federal policies are projected to help substantially reduce these future emissions, we will need to reduce a significant portion through local climate action.
- Although climate change is a global issue, the impacts will be felt locally. Issaquah is projected to experience longer and **more** frequent **drought, heat** waves, less rain when we need it and more when we don’t, and reduced snowpack.
- Reducing emissions is an important part of mitigating global climate change, but local efforts to increase adaptive capacity and resilience are still needed to protect our community and the natural environment we value.

Commented [SV46]: PRAJ: I do think “Community outreach” needs to be a policy. I am guessing it fits in this document as you cannot expect to achieve climate resilience without community involvement. See attached example of “community outreach for climate resiliency” document.

Commented [SV47]: This text allows you to jump to the particular section. If we reorganize, we will want to include these links at the beginning and reorganize them. What is listed here is the proposed reordering from nancy. We left as originally written to not show half of the document in track changes.

Commented [SV48]: Summary from Nancy/Connie

In the Pacific Northwest, we've seen a significant increase in the frequency and severity of wildfires and heatwaves, alongside declining snowpack and increased flooding. These climate hazards have had broad-ranging impacts on our community's health, safety, and local economy.

Greenhouse Gas Emissions Reductions

Background

~~This sub element lays out~~ ~~These~~ ~~out~~ goals and policies are intended to support the reduction of greenhouse gas emissions (GHG) within the Issaquah community and from municipal operations. In 2022, the main sources of GHG emissions within the City of Issaquah and regionally are (1) energy consumption within the built environment (2) transportation (3) refrigerants used in the built environment and transportation and (4) solid waste and wastewater. These categories have been and are expected to continue as critical sectors to address GHG emissions. Goals and policies within this section are in alignment with regional goals and policies intended to reduce GHG emissions.

The City completed a communitywide GHG emissions inventory for 2019 and an updated communitywide and government operations inventory for 2022. The City anticipates conducting new inventories every two to four years using current best available methodologies. These inventories will inform projects, policies, and programs to support the City in tracking progress towards emission reduction targets.

Proposed Goal A: CA Goal A, Inspire climate action through outreach, advocacy, partnership building, engagement and incentives.

EC Goal A. Reduce communitywide greenhouse gas emissions (GHG) and inspire climate action through outreach, advocacy, partnership building, engagement, and incentives, and leadership.

~~CA Goal A, Inspire climate action through outreach, advocacy, partnership building, engagement and incentives.~~

Discussion

The greenhouse gas emission goals and policies intend to reduce emissions from the Issaquah community and government operations (leading by example) and community sources, increase the community's understanding of climate change and opportunities to reduce GHG emissions, advocate for state and federal climate policies, and continue participation in regional partnerships to advance local climate action.

Commented [SV49]: SUGGESTION BY NANCY TO MOVE THIS ENTIRE SECTION AFTER NATURAL ENVIRONMENT TO ALIGN WITH TITLE OF ELEMENT. LEAVING HERE SO AS NOT TO IMPACT JAMIE'S EDITS, BUT FOR DISCUSSION WITH THE BOARD

Commented [SV50]: JOY Can we add a set of pie charts: percent emissions by dept/location and one by the type of emission

Commented [SV51]: JOY: Can we standardize on a 2 OR 4 year cycle and not leave it variable? Lets decide which is best and supported by the board and stick to it so that it can be accounted for in budget predicatably and so that data is reliable and consistent.

Commented [SV52]: ALIX: Should there be a definitions and/or abbreviations section? I don't see where "EC" is described though it can be inferred.

Commented [JF53]: We should either specifically mention municipal emissions here as well to make it clear that is an overarching goal or incorporate a specific policy/goal of what municipal operations impacts there will be

Commented [SV54]: JOY suggestion to separate the below items into points

Commented [SV55]: JOY: Should the policies be written to REQUIRE / ENFORCE / simply ENCOURAGE community businesses and partners to decrease their own emissions? Subscribing to current and future best practices? Use green solutions?

- EC Policy A1** Reduce greenhouse gas emissions compared to a 2007 baseline, by 50% by 2030, 75% by 2040; and 95% and net zero emissions by 2050.
- EC Policy A2** Conduct outreach and education for the greater Issaquah community, including partnering, partner within the region with community leaders, businesses, neighborhoods, schools, and organizations.
- ~~EC Policy A2a~~ and Advocate~~advocate~~ for regional and statewide policies and programs to ~~advance~~achieve the City's greenhouse gas emission mitigation and adaptation goals.~~adaptation.~~
- EC Policy A3** Lead by example by implementing actions to track and decarbonize municipal operations such as the fleet, buildings, and waste, and among other opportunities.
- EC Policy A3a** Develop greenhouse gas emission reduction projects and actions to inspire, educate and demonstrate action to the community.
- EC Policy A4** Support, develop, and implement building and energy codes, programs and policies that reduce GHG emissions ~~across for~~ the largest sources of community-wide emissions from new and existing residential and commercial buildings based on current GHG inventories.
- EC Policy A5** Partner with local, regional, state, and other entities to advance projects and programs that will reduce greenhouse gas emission.
- EC Policy A6** Align budget and procurement decisions in support of climate and sustainability goals.
- ~~EC Policy A xx.~~ Add policy related to using incentives and other benefits to encourage positive climate decisions by residents and businesses.
- ~~EC Policy A7~~ Equitably advance~~Advance~~ programs and policies that achieve GHG reduction targets and increase resilience to climate change with a focus on ~~on~~ overburdened and vulnerable communities to maximize co-benefits of GHG emission reductions.
- EC Policy A8** Begin to inventory and assess opportunities for reducing purposeful chemical discharge for the protection of our watershed and civic health.

Commented [JF56]: I think this needs to show the local reductions that is our goal. It is a vanity metric/irrelevant to show reductions that are all driven by external policies if we can't even determine the goals & progress.

Commented [SV57R56]: PRAJ: What is the 2007 baseline?

Commented [JF58]: We need to make sure this actually happens. This seems like something the board should get engaged in.

Commented [KH59]: JAMIE: align seems to be an imprecise term to incentivize specific budgeting processes favorable to climate and sustainability. Needs to consider capital budget.

Commented [ND60]: Not sure this is an appropriate focus.

Commented [JF61]: This already covers equity. Remove first section to avoid redundancy and not to overstate the key outcome being GHG reduction

Commented [SV62R61]: Jamie's suggestion above fits within here. The implementation plan will determine if the incentives are the appropriate program to implement.

Commented [SV63]: JOY proposed new policy

EC Goal B. Reduce greenhouse gas emissions from buildings through energy efficiency, electrification, and transitioning to renewable energy sources.

Discussion

Using electricity and fossil fuels⁷ to power our homes and buildings contributes over 50% of our communitywide GHG emissions. Washington’s electricity grid is expected to become GHG neutral by 2030 through [current](#) state policy that phases out electric utilities’ use of fossil fuels. These policies are designed to facilitate an equitable transition from fossil fuels to clean electricity in existing buildings, while using energy more efficiently and promoting the use of renewable energy sources and best practices in sustainable building for new buildings.

- EC Policy B1** Decrease energy use (natural gas and electricity) in new and existing buildings by 25% by 2030 from 2017 levels.
- EC Policy B2** Achieve net-zero GHG emissions in new buildings by 2030.
- EC Policy B3** Reduce fossil fuel use in existing buildings by 20% by 2030 and 80% by 2050.
- EC Policy B4** Achieve 100% renewable electricity by 2025 in municipal buildings.
- EC Policy B5** Reduce overall building energy use and improve energy resilience by advancing residential, commercial, and municipal energy efficiency retrofits.
- EC Policy B6** Advance building decarbonization and ensure Issaquah is on track to meet state goals and requirements by shifting from natural gas to electricity in all new and existing buildings in the city.
- EC Policy B7** Transition away from fossil fuels to clean, renewable, energy sources by expanding local renewable energy generation, consumption, and storage.

Educate residents and businesses on all potential incentives, not just those that are implemented by the city.

EC Policy B8 Update building codes to disallow the use of natural gas in all new residential and commercial construction.

Commented [SV64]: ALIX: How do we decrease energy use in New buildings? Is that compared to what energy use averaged in new buildings in 2017?

How does this differ from EC B3? Is what we are measuring different between the two policies?

Commented [JF65]: I had the same feedback on this during the last round: What does this mean? We likely want electricity use to increase during this time so how are you converting between the two to determine whether this has been achieved. Another option would be to state this in terms of efficiency, but that would probably be difficult to measure.

Commented [SV66R65]: This is directly from the ICAP and K4C climate targets. This is speaking to energy conservation. While we do want to transition to electrification, we want to become more efficient and reduce the amount of energy we are using. This will also support grid resilience.

Commented [ND67]: Not sure that this is achievable in six years. We do not have infrastructure in place for this.

Commented [SV68R67]: This Is from the ICAP. Can revise with the ICAP update in 2026; however, the new state energy code will help us get pretty close to net zero.

Commented [SV69R67]:

Commented [SV70]: ALIX: Call out baseline level year. 2017?

Commented [ND71]: This is not achievable in one year. We do not have infrastructure in place for this.

Commented [SV72R71]: PRAJ: Is this really achievable?

Commented [SV73R71]: 80% of the City’s power is on Green Power and we are planning to move the remaining accounts over to solar and wind this year. Should be accomplished in 2024.

Commented [ND74]: Is this homes, businesses, community buildings. Or is this municipal buildings? Needs clarity

Commented [SV75R74]: All buildings

Commented [SV76]: This is in the ICAP

Commented [SV77R76]:

Commented [SV78]: JOY proposed new policy

EC Goal C. Reduce greenhouse gas emissions from transportation and improve community mobility through sustainable land use planning, accessible multimodal transportation options, improved cycling and pedestrian networks, and expanded electric vehicle and alternative fuel infrastructure.

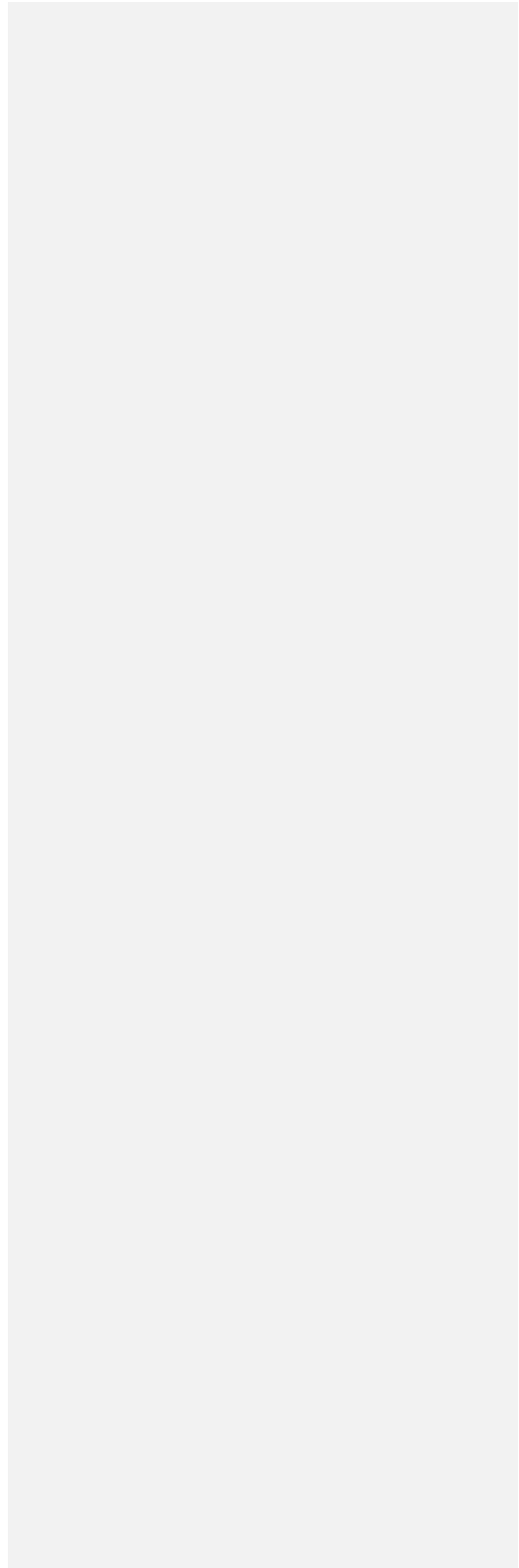
Discussion

Transportation contributes over 40% of our communitywide GHG emissions. Issaquah has in place a Mobility Master Plan, ~~that-which~~ identifies projects and policies to promote public transit and improved pedestrian and cycling networks. Implementation of initiatives, such as updates to land use codes to make it easier to live, work and play in Issaquah, have helped the City achieve a 24.5% non-drive-alone rate. This goal and policy language is intended to prioritize equitable access to transportation choices that reduce GHG emissions while establishing infrastructure and systems that can support zero and low emission travel.

- EC Policy C1** Achieve 50% Single-Occupancy-Vehicle mode share by 2030.
- EC Policy C2** Achieve a 50% reduction in per capita vehicle miles traveled (VMT) from 2017 levels by 2050 in alignment with the K4C goal.
- EC Policy C3** Reduce vehicle emissions by expanding electric vehicle (EV), electric bicycle and other alternative fuel infrastructure. Actively engage in facilitating the transition to electric and other alternative fuel light, medium, and heavy-duty vehicles to provide cleaner and healthier air.
- EC Policy C4** Decrease auto reliance through sustainable land use planning, incentives, and requirements that encourages dense, mixed use, and transit-oriented development patterns in Central Issaquah, Issaquah Highlands, Olde Town and nearby multimodal transportation networks.
- EC Policy C5** Reduce vehicle emissions by promoting multimodal infrastructure in new transportation and land use projects and via retrofitting of existing roadways.
- EC Policy C6** Reduce overall automobile use by prioritizing City capital projects and operating budget to~~promoting~~increase~~promoting-increase~~ biking, walking, and use of transit. Promote telecommuting, enhancing and expanding the City's Commute Trip Reduction (CTR) program and advancing shared and public transportation options.
- EC Policy C7** Prioritize the capture and filtering of water runoff from impervious surfaces to drastically limit the harm inflicted upon natural systems by chemical pollutants emitted by vehicular usage.

Commented [A79]: salt, deicer, tire waste, brake dust, windshield washer, exhaust, and accidental leakage of oils, coolants, etc.

Commented [SV80]: JOY: proposed new policy



EC Goal D. Reduce community waste generation and the greenhouse gas emissions associated with the consumption and disposal of goods and materials.

Discussion

Although solid waste disposal contributes less than 3% of Issaquah’s communitywide GHG emissions, waste prevention and responsible disposal can avoid significant upstream impacts of goods and services. Issaquah diverts about 32% of total waste from landfills (2022 data). By using less, reusing what is already available, and salvaging more, we can improve this diversion rate and avoid the emissions associated with extracting raw materials to generate the goods we consume. In particular, food waste prevention not only helps reduce methane emissions from organic decomposition in landfills but can help get food to those who need it most.

- EC Policy D1** Increase percentage of waste diverted from landfills to 70% by 2030 and 90% by 2050.
- EC Policy D2** Increase waste diversion from landfills by improving community waste collection and disposal systems.
- EC Policy D3** Reduce upstream GHG emissions from goods and materials by promoting sustainably produced products and materials and reducing overall consumption.
- EC Policy D4** Reduce embodied carbon emissions in construction through recycling and deconstruction policies and programs.
- EC Policy D5** Reduce waste generation by promoting a circular economy.

Add a policy related to educating municipal staff, residents and businesses on how to reduce the embodied carbon emissions of their purchases, projects, and decision-making.

EC Policy D6 Create a community collection and transfer of compostable materials to further support community access to participating in waste diversion. Create community programs to incentivize composting and support increases to the number of dwellings in Issaquah that partake in waste collection offerings.

Commented [ND81]: Do we want to add anything regarding food choices and moving away from meat?

Commented [SV82R81]: Do you have a suggested policy? Implement programs that promote low carbon food choices?

Commented [SV83R81]:

Commented [JF84]: This section is currently about waste but could also be more generally about reducing the carbon intensity of the life cycle of products. In this case, consideration of lower carbon building materials could also be mentioned here.

Commented [JF85]: This only represents 3% of our emissions is only because of our methodology. In reality, if you did a holistic evaluation goods/services and the resulting waste would make up a much more meaningful portion.

Commented [KH86]: DIXIE BAIR: be broader about how we can be thoughtful about waste diversion, e.g., plastic recycling, batteries, etc.

Commented [A87]: Having a place to bring compost where all residents can participate without having to be charged a fee makes ecological sense. Same for cardboard and aluminum cans, and glass can be steamed and reused directly.

Commented [SV88]: JOY proposed new policy

Resilience & Wellbeing

Background

The City of Issaquah will face continued and more intense exposure to climate impacts, including, but not limited to, extreme heat, wildfire smoke, flooding events, and drought. Rising temperatures will exacerbate the number of heat-related deaths, and future extreme precipitation events could increase the risk of exposure to water-borne illnesses. Air quality will worsen as wildfire smoke days become more frequent in Issaquah. Respiratory illnesses will multiply, along with risk of heart attack, stroke, cancers, and respiratory diseases. Due to existing health vulnerabilities, barriers accessing services, and existing system inequities, many individuals, including those with pre-existing health conditions, infants and small children, older adults, pregnant women, unhoused community members, Black, Indigenous, and People of Color (BIPOC), ~~BIPOC~~ community members, and individuals with low income, will be particularly sensitive to poor air quality and other climate impacts.

The City of Issaquah must coordinate and collaborate with partners and the community to build resilience to extreme weather events and other climate impacts with a focus on supporting community members most vulnerable to these impacts.

EC Goal E. Ensure that all Issaquah residents are prepared for current and future climate emergencies, with the support of local, state and federal agencies and that the community can effectively adapt to current and future climate impacts.

Discussion

These policies are designed to increase community resilience – the community’s ability to prepare and adapt to the unavoidable impacts of climate change – while supporting overall wellbeing. Communities across Issaquah experience adaptive capacity differently meaning that efforts to build community resilience needs to be aware of and tailored to the needs of different community groups. Additionally, certain community groups such as people with low income, those who are unhoused, people who are linguistically isolated or have limited English proficiency, people with mental health disorders or underlying health conditions, and children and older adults will be exposed disproportionately to climate risks and less able to take preventative measures to minimize those exposures. Policies within this section recognize this disproportionate exposure to climate impacts, and direct City focus on supporting these groups.

EC Policy E1 Leverage local, state, and federal emergency services, including food, water and communication systems to serve Issaquah’s entire residential and business population, ~~those working in Issaquah~~, and nearby communities during major emergencies. Prioritize developing services and plans that support vulnerable and overburdened populations.

EC Policy E2 Provide community education and outreach and expand public

Commented [SV89]: See document from Praj on examples of community outreach for climate resilience (from Port Angeles). Ideas from document are added below.

Formatted: Default Paragraph Font, Font: Verdana, 10 pt, Font color: Text 1, Pattern: Clear

Commented [SV90]: JOY: Should we add language that includes wildlife challenges as well? (corridors, watering holes, nesting grounds, shaded / wodded, native plants, areas, etc.)

Commented [JF91]: Seems like this could be removed to make this clearer / less awkward.

Commented [ND92]: This needs a clearer definition. All of the City is vulnerable to climate change and it is not clear what overburdened means.

Commented [JF93]: I don’t really understand what this is saying. I read that it is saying use services to serve the full population... can we add a clearer action or approach to this?

awareness campaigns on climate risks for the City of Issaquah based on climate vulnerability studies. Specifically identify opportunities to provide education and outreach on extreme heat, wildfire and wildfire smoke, drought, and flooding.

EC Policy E3 Improve community resilience to weather-related climate emergencies via the implementation of relevant plans, strategies and projects that support community members before, during and after emergencies such as resilience hubs and early warning systems.

EC Policy E4 Prepare Issaquah for unavoidable climate impacts through climate change adaptation programs and infrastructure upgrades.

EC Policy E5 Prioritize resilience planning, education, outreach and funding for frontline communities or historically disenfranchised communities that are disproportionately impacted by climate change based on research conducted on climate vulnerabilities in Issaquah.

EC Policy E6 Fund and support the creation of a Community Environmental Steward whose role facilitates awareness of city resources and fosters connection between the city administration, neighborhoods, and microenvironments within the city.

Commented [SV94]: JOY: Provide training? Provide preparedness checklists? Tool kits? 3-day pails?

Commented [SV95]: NANCY: not sure what this is

Commented [SV96]: JOY

Commented [SV97]: NANCY: is this research available

Commented [A98]: Education, connection, and available tools to all residents for their physical and psychological wellbeing

Commented [SV99]: JOY proposed new policy

Commented [SV100]: Need to show this text for review. It got messed up with the deletion of the whole section and I can't reject the deletion.

Formatted: Highlight

Commented [SV101]: From Praj

Formatted: Highlight

Formatted: Highlight

Commented [SV102]: This section is primarily pulled from the land use element. That was decision the Board made with staff in the summer.

Commented [JF103]: It seems like we need to pull this section up into the top introduction section and consider providing guidance for this and for climate in each section.

Commented [JF104R103]: It seems like there is missing hierarchy in the climate section to be consistent with how this section comes together.

Commented [JF105R103]: Are there any key dependencies in other elements (in particular land use) that should be called out here?

Commented [SV106]: ALIX: Add background information that our natural systems will be our best tool for mitigating and adapting to climate change. Also include background that they provide mental and physical health benefits for our community members.

EC Policy E2 Provide community education and outreach and expand public awareness Suggestions for additional resilience policies around outreach. Examples from Port Angeles:

- Communicate and empower residents in the climate resiliency planning process by educating and energizing Port Angeles' residents about climate change and the process.
- Build and inspire communitywide support for the Climate Resiliency Plan through a transparent, inclusive, and accessible process that is responsive to community concerns.
- Support the cohesive and self-sustaining CAPG ready to move forward with plan objectives and future planning efforts.

Natural Systems & Environmental Stewardship

General Comment: In past comprehensive plans, the environmental elements were generally covered in the land use section. To avoid duplication and have consistency, the appropriate sections of the land use element should be added or referenced here. Also, both should be checked for consistency. -Water Resources

Background

Forests, trees, natural, open spaces, lakes, streams, wetlands, and other natural systems within and around Issaquah and Lake Sammamish function as indispensable habitat for salmon and an array of wildlife species. Wetlands, bogs, peat, and the various layers of healthy

forested land provide essential ecosystem services that help to control flooding and improve water quality, and provide a healthy bionetwork.
~~- Forests and trees provide natural cooling during extreme heat for humans and wildlife. Both trees and most wetlands provide carbon sinks, preventing green house gas emissions in those areas.~~

Commented [SV107]: JOY edits

EC Goal F. ~~Protect, conserve and expand~~ Preserve and enhance natural landscape ~~s, systems, landscapes, biodiversity and conserve water resources to improve climate resiliency, protect vital habitats, ecosystems and natural resources, improve local carbon sequestration, and enhance community green space.~~

Discussion

Issaquah’s community identified protection and expansion of the city’s natural resources and green space as a top priority. ~~This goal and policy language prioritizes Issaquah’s tree canopy, currently at 51% of total city acreage, as central to carbon sequestration, recreation, and preservation of vital habitats. This goal also focuses on addressing climate risks by conserving valuable water resources, protecting water quality, and preparing built systems for increasing flood events.~~

EC Policy F1 Ensure the quality, quantity, and recharge ability of groundwater within the Lower Issaquah Valley Aquifer is not adversely impacted as development in the City continues by administering a Critical Aquifer Recharge Area program ~~of aquifer protection~~, including restricting or prohibiting land uses or activities that could potentially contaminate the aquifer recharge areas in the event of an accidental spill or dumping.

Commented [SV108]: NANCY; recommended for deletion – move to G

Formatted: Not Strikethrough

Commented [JF109]: Necessary?

Formatted: Not Strikethrough

EC Policy F12 ~~Benefit from F2~~ Capitalize on the many ~~environmental~~ and community ~~values~~ benefits of trees and natural systems, including potable water, carbon capture, shade and stormwater retention, by ~~maintaining and expanding tree canopy cover~~, preserving tree health and biodiversity, and expanding climate resilient natural landscapes.

Commented [SV110]: JOY Further define the necessary support for a growing and thriving tree canopy with detailed definitions and guidance for urban forestry management. This should prioritize the natural life cycle of a tree and the need for such protections as groves, and elevated walkways.

Commented [JF111]: Seems like we should put the action first. Right now we often bury the policy behind the benefits when the policy should be clear and the first thing you read.

Formatted: Not Strikethrough

EC Policy F3 Conserve valuable water resources by promoting water efficiency and reuse and improving stormwater management.

Commented [SV112]: NANCY: recommend move to section G

Formatted: Not Strikethrough

EC Policy F4 Monitor and address known and emerging contaminants including PFAS and 6PPD-Q from entering streams, wetlands, and other environmental sensitive natural systems.

Commented [SV113]: NANCY Recommend move to G

Commented [JF114]: Seems like this could be combined with F4

EC Policy F5 Ensure pollution generating hard surfaces have adequate water quality treatment.

Commented [SV115]: NANCY: recommended for deletion- moved to G

Formatted: Not Strikethrough

Streams, Wetlands and Wildlife Water Resources

Background

Issaquah is located on the southern end of Lake Sammamish, primarily on a valley floor surrounded by the steep hillsides of Tiger, Squak and Cougar Mountain. The City has several salmon-bearing streams including Tibbetts Creek, Schneider Creek, Issaquah Creek, Lewis Creek, the East and the North Fork of Issaquah Creek, as well as many acres of wetlands.

Formatted: Highlight

While it is not always possible to return water bodies to their original condition, restoring lakes, streams and creeks, and maintaining their functions and values as much as possible, can improve fish and wildlife habitat, environmental functions, recreational uses, and aesthetics. The Shoreline Master Program (SMP) governs Lake Sammamish, the Mainstem of Issaquah Creek and the East Fork Issaquah Creek.

Commented [ND116]: Connie to rewrit

Issaquah is located on the slopes and valley of the surrounding slopes of the Cascade Foothills, including Tiger, Squak and Cougar Mountains. The City has several salmon bearing streams including Tibbetts Creek, Schneider Creek, Issaquah Creek, Lewis Creek, the East and the North Fork of Issaquah Creek, as well as many acres of wetlands.

Formatted: Not Highlight

Water generally flows both above and below ground from the higher elevations to Lake Sammamish. The Issaquah Valley Aquifer, below the valley floor, is a series of ground water layers that intertwines with Issaquah streams, wetlands and Lake Sammamish creating our natural water resource system.

In summer the flows reduce causing water restrictions, while in winters Issaquah floods periodically. Restoring the water system to its original condition as much as possible will provide the quality and quantity of water needed for human, wildlife and habitat use.

Improvements in habitat are provided in a variety of ways: as mitigation, projects, maintenance and natural processes (fallen trees, beavers, stream meandering). These improvements often overlap and may be altered by circumstances, however the intent of the improvement provides for a continual improvement in habitat values.

Formatted: Font: Arial, 11 pt, Font color: Custom Color(RGB(34,34,34)), Pattern: Clear (White)

EC Goal G. Enhance wetlands and the riparian corridors of Lake Sammamish, and streams to improve environmental functions, protect water quality, and improve and fish and wildlife habitat.

Commented [JF117]: Is the word "creeks" missing here? Seems like it is incomplete.

Formatted: Font: 12 pt

Discussion

This section provides policies to ~~maintain~~enhance the ecosystem services and -functions while acknowledging the need to accommodate growth. The Issaquah community values being responsible stewards of natural resources so future generations may enjoy and benefit from them as the community does today. It is equally important to recognize that resources exist for the benefit of not only humans but also for other living creatures and plants, as well.

EC Policy G1 ~~Connect natural areas to stream corridors and open spaces. The goals and policies of the City's adopted Shoreline Master Program (SMP) shall be considered an element of this~~

~~Comprehensive Plan. All other portions of the SMP, including use regulations, shall be considered part of the City's development regulations.~~

EC Policy G2 ~~Enhance riparian corridors and wetlands. Connect natural areas to stream corridors and open spaces.~~

EC Policy G3 Acquire creekside parcels to enhance and restore Issaquah's creeks ~~systems.~~

~~**EC Policy G4** Enhance Riparian corridors and wetlands to integrate views, open space, and stormwater management they provide into all developments, where applicable, to support ecosystem health and resilience.~~

Commented [JF118]: Very awkwardly worded

~~**EC Policy G5** Explore methods to provide incentives to streamside property owners for enhancement of riparian habitat.~~

EC Policy G6 Protect, enhance, and restore natural flood storage and conveyance, and the ecological functions ~~and values of floodplains, wetlands, and riparian corridors~~ to build resilience.

EC Policy G7 Increase aquatic habitat resilience to low summer flows by increasing water residence time, storing water on landscape, conserving water, protecting and preserving groundwater, ~~keeping waters cool, and protecting quality.~~

Commented [JF119]: Seems like it would be more appropriate to include this above "Increase aquatic habitat resilience to low summer flows and see waters cool by...."

EC Policy G8 Incorporate natural drainage practices, including green stormwater infrastructure, into ~~park all infrastructure and planned development, to provide community amenities and watershed benefits, where appropriate and feasible.~~

Commented [SV120]: JOY: This policy should include references to prescriptive best practices. For example, no boat exhaust to water, preventing removal of shoreline trees that shade the water. Greater restoration of damaged or stripped waterline. Litter control and waste generated by unhoused population living near the watershed.

~~**EC Policy G9** Ensure natural areas are maintained, while further planning for higher functional values. Integrate the Green Necklace and park system plans goals and policies into the riparian corridors to achieve multiple benefits, including enhanced fish and wildlife habitat, trail connections and environmental education.~~

Commented [ND121]: This is a strategy – not a policy

EC Policy G10 Improve fish habitat and remove barriers from natural systems.

Formatted: Highlight

~~**EC Policy G11** The goals and policies of the City's adopted Shoreline Master Program (SMP) shall be considered an element of this Comprehensive Plan~~

Commented [SV122]: ALIX: Improve instream habitat and remove barriers from natural systems to benefit fish and other aquatic life.

EC Policy G12 Ensure the quality, quantity, and recharge ability of groundwater within the Lower Issaquah Valley Aquifer is not adversely impacted as development in the City continues by administering a Critical Aquifer Recharge Area program of aquifer protection, including restricting or prohibiting land uses or activities that could potentially contaminate the aquifer recharge areas.

Formatted: Indent: Left: 0.5", Hanging: 1.38"

Formatted: Body Text, Indent: Left: 0.5", Hanging: 1.38", Right: 0.35", Line spacing: Multiple 1.15 li, Tab stops: 1.88", Left

General Comment: Need to add policies on wildlife, wildlife in our backyards, education, engagement and regional participation. Also, need more of a background description on fish and wildlife habitat.

Formatted: Font: Italic, Highlight

Formatted: Indent: Left: 0.5", First line: 0", Tab stops: 0.5", Left + Not at 1.88"

Formatted: Font: Italic, Highlight

Formatted: Font: Italic, Highlight

Formatted: Font: Italic

Formatted: Font: Verdana, 10 pt, Bold

Formatted: Font: Bold

Formatted: Font: Verdana, 10 pt

WILDLIFE
Background

Wildlife is one of the most discussed facets of Issaquah. Everyone sees the birds and bunnies. Nearly everyone sees the deer, bear, coyote and bobcat backyard photos, if not the animals themselves. The protection of Issaquah salmon is a core value for the community. Beavers are beginning to rework our streams providing an opportunity for large ecological advancement.

Goal: Wildlife thrives in Issaquah, even as the City becomes more dense.

Formatted: Font: Verdana, 10 pt, Bold

Policy: City and community education provides tools to support wildlife on a neighborhood basis.

Formatted: Font: Verdana, 10 pt

Policy: City ensures robust and knowledgeable monitoring and enhancement of wildlife and its habitat.

The goals and policies of the City's adopted Shoreline Master Program (SMP) shall be considered an element of this Comprehensive Plan. All other portions of the SMP, including use regulations, shall be considered part of the City's development regulations.

Trees

Background

The City of Issaquah has a rich heritage of wooded areas such as the Tradition Plateau Natural Resource Conservation Area, the Talus Native Growth Protection Area, McCarry Woods, Park Pointe, other Native Growth Protection Easements and residential areas that include many ~~Significant-significant~~ and Landmark Trees. ~~Tree Ppreservation~~~~Preservation of these trees~~ is important to maintain the environmental characteristics of Issaquah, ~~and~~ to offset the urban heat island effects, ~~and~~ sequester carbon dioxide emissions. Urban forests meet the diverse needs of the community by improving air quality, absorbing rainwater, enhancing biodiversity and wildlife habitat. They provide shelter to animals and recreational areas for people, moderate local climate, slow wind and stormwater, and provide shade for homes and businesses ~~to conserve energy~~.

EC Goal H. Maintain and ~~Enhance-enhance the~~ citywide tree canopy in the City for the numerous economic, environmental, and aesthetic benefits that trees provide.

Discussion

Urban Forestry is the ~~overall~~ resource management practice that includes the long term care of trees and their associated understory plantings. It addresses tree care in natural open space and within the essential urban environment. ~~A guideline for urban forestry management to be addressed through an Urban Forestry and Open Space Management Plan.~~

The following policies ~~provide general guidance to~~ are intended to manage the tree canopy throughout ~~the~~ in the City of Issaquah ~~Community~~.

- EC Policy H1** Achieve 55% tree canopy coverage of total Issaquah acreage by 2035.
- EC Policy H2** Retain existing trees in critical areas and their buffers, along designated walking and bicycling corridors and in other green spaces.
- EC Policy H3** Maintain and strengthen ~~, where possible,~~ Tree City USA status.
- EC Policy H4** Preserve the forest ecosystems ~~found in Native Growth Protection and open space areas in Issaquah~~ through maintenance and restoration including planting of appropriate trees, ~~enhancement,~~ removal of invasive vegetation and adequate drainage and watering.
- EC Policy H5** Proactively manage municipal ~~forests-trees~~ in coordination with regional partners to further enhance community resiliency to

Commented [JF123]: This should mention forest ecosystems, not just the canopy

Commented [SV124]: ALIX What is a guideline? I'm not sure what this sentence is meant to say

Commented [SV125]: PRAJ: How much is the current tree canopy coverage for Issaquah? Tree canopy is not the same as acreage in plantation. If we need 55% tree canopy by 2035, we should be on target to plant all needed trees by now or within next few years.

Commented [SV126R125]: We are currently (from last study) at 51%. Good topic for discussion with Dan and the UFMP.

Formatted: Font: Not Bold

Commented [SV127]: JOY Can we include language that preserves the natural understory of the native forest in appropriate places. (Do leave natural mulching materials in park garden beds rather than clean rake everything)

climate change, build forest ecosystem resilience, protect surface water quality and protect wildlife habitat.

MISSING POLICIES:

Need to add policies on education, engagement and regional coordination.

Formatted: Highlight
Commented [SV128]: JOY: I would like to have time for the board to discuss policies that have not been included. I think that further refinement and additions to the draft policies would be a very interesting discussion. I have included some rough thoughts on policy thoughts that still need expanding.

Discharging of chemicals

Must have weight/ volume used, type, and categories of use such as pervious and impervious. This will help us to track and monitor so that targets can be set moving to elimination. Policy creation - discharging of compounded chemicals is sunset going to down to zero.

Clean air policies- increasing with green plantings at high traffic areas and further reducing the better management of traffic flow to reduce idling.

Push for policy to support dark skies initiative with measurement, reductions, and accountability. Current light code must be supported with enforcement and behavioral changes.

Policy for auditory disruption. Noise pollution must be addressed in policy in order to add future code to link practices and decibels.

Visual blight of the built environment. Natural elements need to be prioritized for better integration with green spaces.

Paradigm shift to help the psychological realities of climate impacts. Need to commit resources to the shift of mindset away from a consumption driven, single use society.

Results & Accountability

Formatted: Body Text
Commented [JF129]: The fact that the natural environment topics are not covered by any single plan and therefore not really measurable seems like where the solution to our board annual process on the natural environment could be used.
Formatted: Font: 12 pt
Formatted: Font: Not Bold

EC Goal I. Measure the effectiveness and success of the Comprehensive Plan in achieving community visions, goals and policies.

Discussion

This goal and related policies intend to identify significant functional plans which implement the long-term vision for the Environment Stewardship and Climate Resilience Element of City's comprehensive plan.

EC Policy I1 Ensure Comprehensive Plan goals and policies are accompanied, accomplished by providing adequate budget and oversight, and implementation of programs consistent with the Plan and other City plans.
by related and required actions

Commented [SV130]: JOY What are the metrics? Can we have less broad metrics that are measured yearly? For parks? For School? For budgeting? Each section should have at least 1 metric that can be measured and analyzed regularly without undue costs.

• ~~, including but not limited to those listed in the Issaquah Climate Action Plan.~~

Formatted: Indent: Left: 0.5", Hanging: 1.38", No bullets or numbering

Commented [JF131]: Should the Urban Forest Management Plan be called out here? Why aren't Stormwater, Transportation and other related plans mentioned?

<END OF TEMPLATE>